



# The Bodfari

## 3 Bedroom Detached Home with a private driveway and garden

The Bodfari is an impressive three-bedroom home that boasts an attractive dual aspect design, offering a traditional appearance. The ground floor includes a spacious lounge, a cloakroom and an open-plan kitchen/dining room with French doors leading to the garden.

On the first floor there is a generous master bedroom with en-suite facilities; two further bedrooms and a family bathroom. A private driveway leads off to an enclosed rear garden.



### Room Sizes

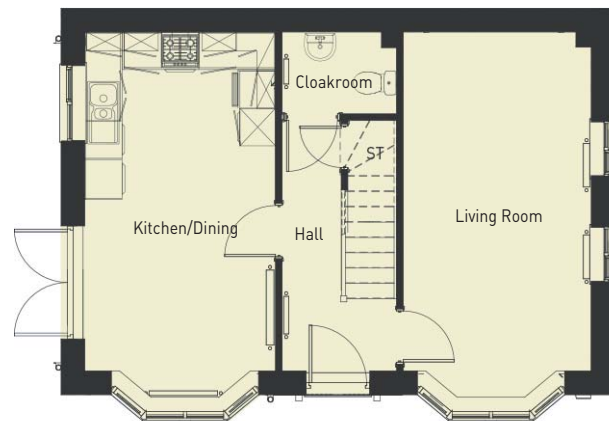
953 sqft

#### GROUND FLOOR

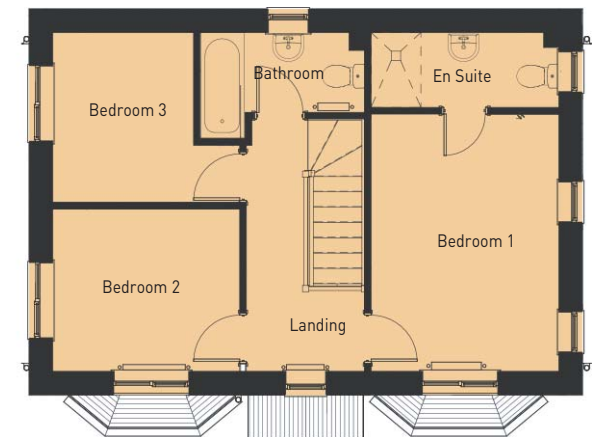
	<i>imperial</i>	<i>metric</i>
Living Room	9'10" x 19'1"	3.01m x 5.83m
Kitchen/Diner	10' x 19'1"	3.06m x 5.83m
Cloaks	6' x 4'3"	1.83m x 1.30m
Hall	6' x 13'1"	1.83m x 4.00m

#### FIRST FLOOR

	<i>imperial</i>	<i>metric</i>
Bedroom One	9'10" x 13'5"	3.01m x 4.11m
En suite	9'10" x 3'11"	3.01m x 1.20m
Bedroom Two	9'10" x 8'6"	3.00m x 2.59m
Bedroom Three	9'10" x 8'10"	3.00m x 2.71m
Bathroom	8'7" x 5'7"	2.63m x 1.70m



GROUND FLOOR



FIRST FLOOR